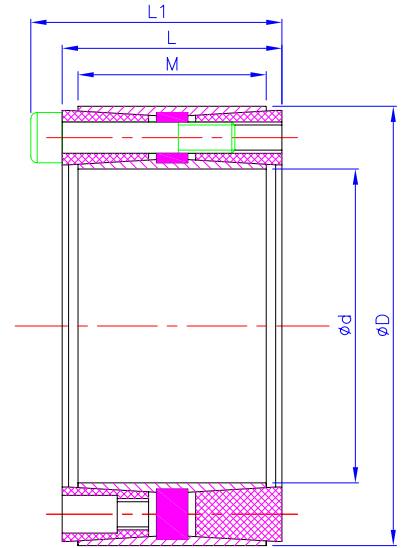
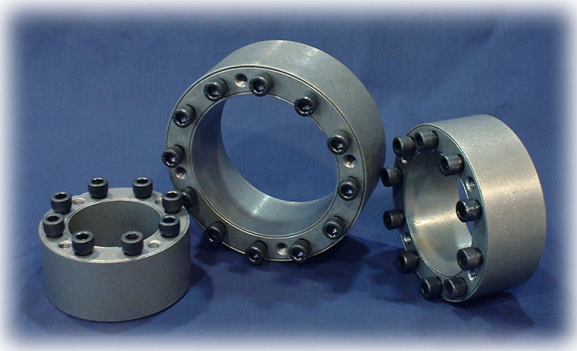


Wellock 11



Catalog d X D	fundamental dimensions			internal hexagon headed bolt		rated load		Pf N/mm ²	MA N.M	G kg
	M	L	L1	SIZES	QTY	Ft KN	Mt KN.M			
70 X 110	50	58	68	M10 x 55	8	145	5.10	112	49	2.48
75 X 115	50	58	68	M10 x 55	9	163	6.10	116	49	2.62
80 X 120	50	58	68	M10 x 55	9	163	6.55	109	49	2.76
85 X 125	50	58	68	M10 x 55	10	182	7.70	114	49	2.90
90 X 130	50	58	68	M10 x 55	10	182	8.10	107	49	3.04
95 X 135	50	58	68	M10 x 55	10	182	8.60	102	49	3.18
100 X 145	60	70	80	M10 x 65	10	182	9.10	80	49	5.44
110 X 155	60	70	80	M10 x 65	10	218	10.00	75	49	6.00
120 X 165	60	70	80	M10 x 65	12	319	13.10	80	49	6.88
130 X 180	68	80	92	M12 x 75	12	319	20.70	95	86	8.88
140 X 190	68	80	92	M12 x 75	12	319	22.30	89	86	9.44
150 X 200	68	80	92	M12 x 75	12	372	23.90	83	86	10.08
160 X 210	68	80	92	M12 x 75	14	426	29.80	90	86	10.72
170 X 225	75	87	99	M12 x 80	16	426	36.20	89	86	15.68
180 X 265	75	87	99	M12 x 80	16	479	38.30	84	86	16.48
190 X 250	88	100	112	M12 x 90	18	479	45.50	76	86	19.04
200 X 260	88	100	112	M12 x 90	18	511	47.90	72	86	19.92
220 X 285	98	110	124	M14 x 100	14	657	56.20	63	135	23.68
240 X 305	98	110	124	M14 x 100	18	730	78.80	74	135	25.52
260 X 325	98	110	124	M14 x 100	20	105	94.90	76	135	27.44
280 X 355	120	132	148	M16 x 120	20	1218	142.00	80	210	41.60
300 X 375	120	132	148	M16 x 120	24	1218	182.00	89	210	44.24
320 X 405	135	147	159	M16 x 120	24	1218	194.00	75	210	53.85
340 X 425	135	147	159	M16 x 120	24	1218	207.00	71	210	56.80