



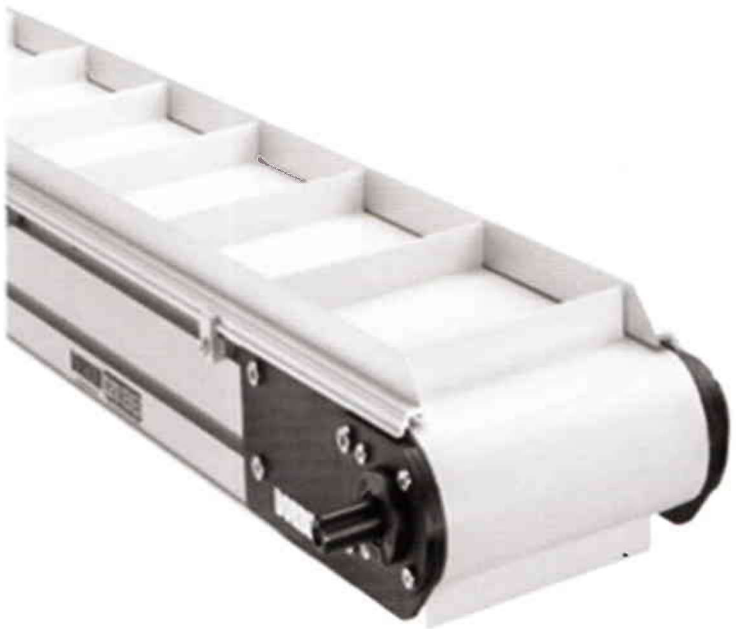
# VB CONVEYOR BELTS

GreatOrientalTrading  
www.gotrading.co.th

Standard types				Min. pulley-diameter <sup>20</sup> C ①	Belt N/mm	Thermal application range ③ °C	Friction factors (against steel) ④		Application ② run over slider bed
							running	carrying	
<b>O-coated</b>									
	EM	8/2 00+00	(PVC transp) AS *	30	8	-10/+ 80	0.15	0.15	+
	EM	14/2 0+0	(PVC transp) *	30	14	-10/+ 80	0.15	0.15	+
<b>PU-coated</b>									
*	EM	4/1 00+02	PU white AS *	KE	4	-30/+ 90	0.15	0.40	+
*	EM	4/1 00+02	PU green *	KE	4	-30/+ 90	0.15	0.40	+
*	EM	8/2 00+02	PU white AS *	20	8	-30/+ 90	0.15	0.40	+
	EM	8/2 00+02	PU white *	20	8	-30/+ 90	0.15	0.40	+
*	EM	8/2 00+02	Pu green AS	20	8	-30/+ 90	0.15	0.40	+
<b>PVC-coated</b>									
	EM	4/1 00+05	PVCF white **	KE	4	-10/+ 80	0.15	0.70	+
*	EM	8/2 00+05	PVCF white **	50	8	-10/+ 80	0.15	0.70	+
	EF	12/2 00+10	PVCF white *	80	12	-10/+ 80	0.15	0.70	+
*	EF	12/2 P1+07	PVCF white *	100	12	-10/+ 80	0.40	0.70	0
*	EF	12/2 05+07	PVCF white	60	12	-10/+ 80	0.70	0.70	0
	EF	12/2 10+20	PVCF white	150	12	-10/+ 80	0.70	0.70	0
*	EF	18/3 10+20	PVCF white	200	15	-10/+ 80	0.70	0.70	0
	EF	20/2 10+20	PVCF white	300	20	-10/+ 80	0.70	0.70	0
	EF	30/3 10+10	PVCF white	400	30	-10/+ 80	0.70	0.70	0
*	EM	8/2 0+05	PVC green	50	8	-10/+ 80	0.15	0.70	+
*	EM	10/2 0+07	PVC green	60	10	-10/+ 80	0.15	0.70	+
	EM	14/2 0+05	PVC green	60	14	-10/+ 80	0.15	0.70	+
	EM	14/2 0+20	PVC green	110	14	-10/+ 80	0.15	0.70	+
	EM	21/3 0+20	PVC green	140	21	-10/+ 80	0.15	0.70	+
*	EF	12/2 P1+07	PVC green	60	12	-10/+ 80	0.40	0.70	0
<b>PVCH-coated</b>									
	ESF	6/2 0+03	PVCH black	40	6	-10/+ 80	0.20	0.30	+
	EM	8/2 0+02	PVCH green	50	8	-10/+ 80	0.15	0.30	+
	EM	7/1 0+05	PVCH green	KE	7	-10/+ 80	0.15	0.30	+
	EM	14/2 0+05	PVCH green	60	14	-10/+ 80	0.15	0.30	+
	EM	21/3 0+05	PVCH green	120	21	-10/+ 80	0.15	0.30	+
<b>NPF belts</b>									
	NPF 25		black HC	40	9	-10/+ 120	0.25	0.25	+
	NPF 40		black HC	70	9	-10/+ 120	0.25	0.25	+
	NPF 60		black HC	120	10	-10/+ 120	0.25	0.25	+
<b>Si-coated</b>									
	EM	4/1 00+05	Si white *	30	4	-40/+ 150	0.15	1.0	+
	EM	8/2 00+05	Si white *	60	8	-40/+ 150	0.15	1.0	+
<b>Incline and structured belts</b>									
	EM	8/2 00+P1	PVCF white *	30	8	-10/+ 80	0.15	-	+
	EM	8/2 0+P6	PVC green LN	80	8	-10/+ 80	0.15	-	+
*	EM	8/2 0+P6	PVC green WP	80	8	-10/+ 80	0.15	-	+
*	EF	12/2 0+P6	SR black	100	12	-10/+ 80	0.15	-	+
	EF	16/2 0+P6	SR tan	50	16	-40/+120	0.20	-	+
	EF	24/3 0+P6	SR tan	75	24	-40/+120	0.20	-	+
	EM	8/2 00+P10	PVCF white *	80	8	-10/+ 80	0.15	-	+
	EM	8/2 0+P24	PVC green	80	8	-10/+ 80	0.15	-	+

\*Exstock

accum. or diverter	Laterally rigid ⑤	Antistatic ②	Belt thickness approx.  mm	Belt weight approx.  kg/m <sup>2</sup>
+	+	+	1.4	1.7
+	+	+	1.7	2.0
+	+	+	0.7	0.7
+	+	-	0.7	0.7
+	+	+	1.5	1.7
+	+	-	1.5	1.7
+	+	+	1.5	1.7
-	+	-	1.0	1.0
-	+	-	1.9	2.4
-	-	-	2.6	3.1
-	-	-	3.1	3.8
-	-	-	2.8	3.5
-	-	+	4.5	6.3
-	-	+	5.6	8.0
-	-	+	5.7	8.0
-	-	+	7.3	9.0
-	+	+	1.9	2.4
-	+	+	2.6	2.8
-	+	+	2.2	2.4
-	+	+	3.1	3.7
-	+	+	4.6	5.0
-	-	+	3.1	3.5
+	-	+	2.0	2.2
+	+	+	2.0	2.4
+	+	+	1.0	1.0
+	+	+	2.1	2.3
+	+	+	3.4	4.0
0	-	+	2.5	1.5
0	-	+	4.0	2.2
0	-	+	6.0	5.5
-	+	+	0.8	0.8
-	+	+	1.6	1.9
-	+	-	2.0	2.4
-	+	+	5.6	4.0
-	+	+	5.0	4.3
-	-	+	6.0	5.0
-	-	-	6.5	5.9
-	-	-	7.0	6.4
-	+	-	1.8	1.9
-	+	+	2.5	2.8



## ENDLESS JOINING SYSTEMS

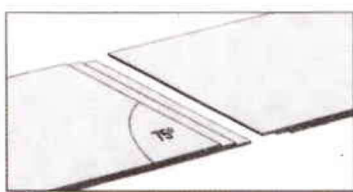
We have the optimal endless joining system for all our high quality conveyor belts



**SINGLE Z.**  
it is made exclusively on 1-ply belts.



**DOUBLE Z.**  
it is executed on all conveyor belts with 2 or 3 plies; it ensures a high quality standard



**Step splice (hot)**  
The strong joining method

- Pulling strength even in the joining area
- Also recommended for lateral forces
- Suitable for every normal load application
- Trouble free endless joining



**Mechanical Fastening**  
The alternative

- Shortest manufacturing interruptions
- Rapid fitting and dismantling on the machine
- Easy cleaning of conveyor belt and machines

