

FRANKCO



Industrial Hose Pump



Hose Pump

Solution for corrosive, abrasive, viscous with particle and shear sensitive product.

Hose Pump

Frankco hose pump focuses on achieving full customer satisfaction at all times, offering the best product, high efficiency, high precision, support and service so that their experience is always good and with a view to new business opportunities.

Chemical

Corrosive acids and bases

Water and Waster Treatment

Lime, kalic, sodium hypochlorite, ferric chloride and sludges

Pulp and Paper

Dyes, sizing agents, retention aids and titanium dioxide

Paint and pigments

Dispersion mill feed, pigment and latex transfer

Mining Tailing slurries, sludges and reagents
Ceramics and glass
fine china, brick and tiles

Construction

Cement, coatings, spray concrete, colorants and aggregate

Printing and packaging

Varnishes, inks, coatings and adhesives

Textiles

Fibers, dyes and acids

Food and beverage

Wine, brewery, dairy, bakery, flavorings and additives

Working Principle



Engineered for Simplicity

The pumping process works by alternately compressing and releasing a precisely machined hose between the pump housing and compression shoes. This action pushes the fluid forward towards the discharge, while the rebounding hose behind the shoe draws more fluid in. With constant 100% compression, there's no slipping, ensuring superior metering accuracy and pressure control. The absence of seals, seats, or valves makes handling abrasive slurries easy, while the fluid's contact is limited to the inner hose wall, making the pump ideal for aggressive chemical applications.

Advantages

- Self-priming with superior suction lift 9.5 meters.
- Damage free continuous dry running.
- Suitable for corrosive, abrasive, viscous fluids and shear sensitive products.
- Ease installation, operation and maintenance.
- $\pm 1\%$ metering accuracy.
- No seal or valve design to lower total cost of ownership.

Product Parameters

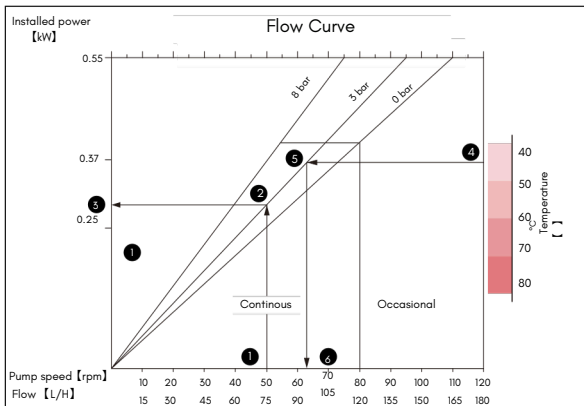
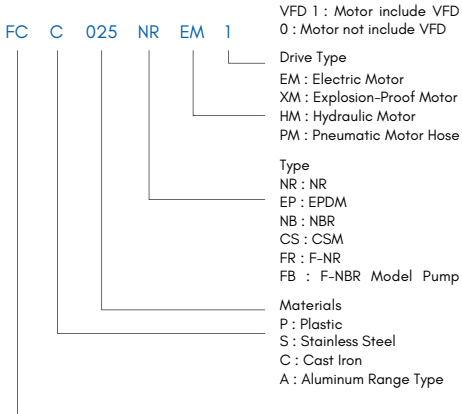
Model	Rated Flow	Max Pressure	Max Speed	Power	Weight
FC25	792 L/H	16 bar	44 rpm	1.1 kW	108 kg
FC32	1,650 L/H	16 bar	44 rpm	1.5 kW	122 kg
FC40	3,280 L/H	16 bar	41 rpm	2.2 kW	194 kg
FC50	7,175 L/H	16 bar	41 rpm	4 kW	282 kg
FC65	18,000 L/H	16 bar	45 rpm	5.5 kW	550 kg
FC80	24,500 L/H	16 bar	35 rpm	11 kW	900 kg
FC100	42,000 L/H	16 bar	35 rpm	15 kW	1,300 kg
FC125	66,000 L/H	16 bar	33 rpm	22 kW	2,400 kg



Industrial Hose Pump

Solution for corrosive, abrasive, viscous with particle and shear sensitive product.

Identification Code



How to use the pump curve

- Start by selecting the flow rate you need; this will correspond to the pump speed.
- Identify the required discharge pressure for your application.
- Move horizontally to the left from your flow rate to determine the motor power needed.
- Locate the maximum operating temperature the pump can handle for your specific conditions.
- Ensure the calculated discharge pressure aligns by moving horizontally on the curve.
- Move vertically down from your selected flow rate to verify the maximum recommended pump speed.



FC 25

Pump Material:
Aluminum alloy, ABS,
Stainless Steel, Iron.

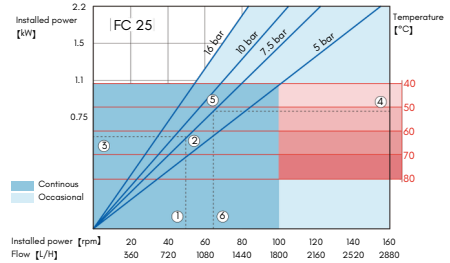
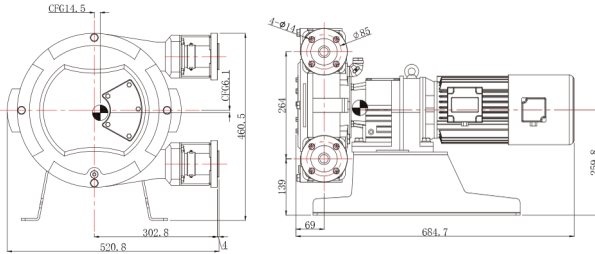
Hose Material:

- NR • EPDM
- NBR • CSM
- F-NR • F-NBR

Other Parameters:
Weight: 108 kg
Lubricating oil dosage: 2L

Technical Parameters

Self-Priming Height [m]9.5(water) Maximum
Particle Diameter [mm]4.2 Cliber Size
[inch]1" Motor Power [kW]1.1/1.5 Rated
Voltage [V]220/380 Rated Speed [rpm]44
Capacity [L]0.3 Rated Flow [L/H]792
Maximum Flow [L/H]2880 Max Pressure
[bar]6 Maximum Head [m]60



Note: All dimensions are in millimeters (mm); The length of the motor will vary with different brands and types, please consult you local dealer for details.

Note: see P3 for the usage of graph.



FC 32

Pump Material:

Cast Iron
 Contact Material: ABS,
 Stainless Steel, Titanium.

Hose Material:

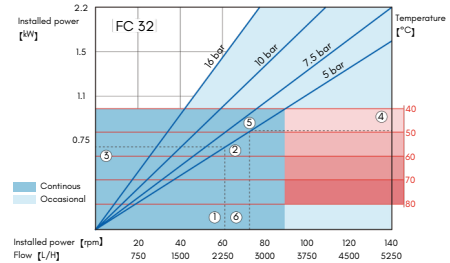
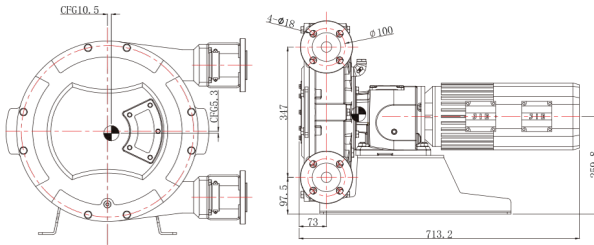
- NR • EPDM
- NBR • CSM
- F-NR • F-NBR

Other Parameters:

Weight: 122 kg
 Lubricating oil dosage: 3L

Technical Parameters

Self-Priming Height [m]9.5(water) Maximum
 Particle Diameter [mm]5.4 Cliber Size
 [inch]1-1/4" Motor Power [kW]1.5 Rated
 Voltage [V]220/380 Rated Speed [rpm]44
 Capacity [L]0.63 Rated Flow [L/H]1650
 Maximum Flow [L/H]5250 Max Pressure
 [bar]16 Maximum Head [m]160



Note: All dimensions are in millimeters (mm); The length of the motor will vary with different brands and types, please consult you local dealer for details.

Note: see P3 for the usage of graph.



FC 40

Pump Material:

Cast Iron
Contact Material: ABS,
Stainless Steel, Titanium.

Hose Material:

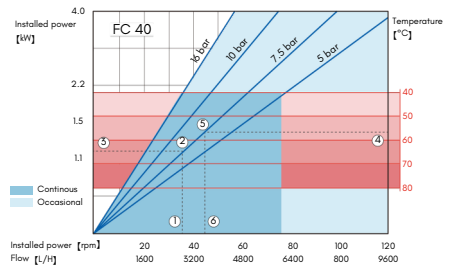
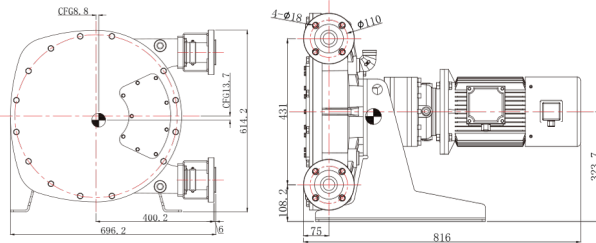
- NR • EPDM
- NBR • CSM
- F-NR • F-NBR

Other Parameters:

Weight: 194 kg
Lubricating oil dosage: 5L

Technical Parameters

Self-Priming Height [m]9.5(water) Maximum
Particle Diameter [mm]6.7 Cliber Size [inch]-
1/2" Motor Power [kW]2.2/4 Rated Voltage
[V]220/380 Rated Speed [rpm]41 Capacity
[L]1.3 Rated Flow [L/H]3280 Maximum Flow
[L/H]9600 Max Pressure [bar]16 Maximum
Head [m]160



Note: All dimensions are in millimeters (mm); The length of the motor will vary with different brands and types, please consult you local dealer for details.

Note: see P3 for the usage of graph.



FC 50

Pump Material:

Cast Iron
Contact Material: ABS,
Stainless Steel, Titanium.

Hose Material:

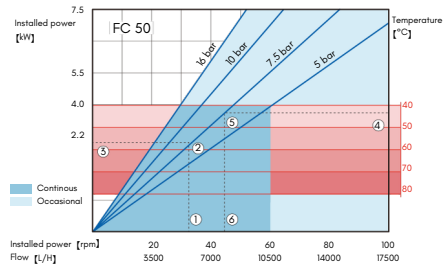
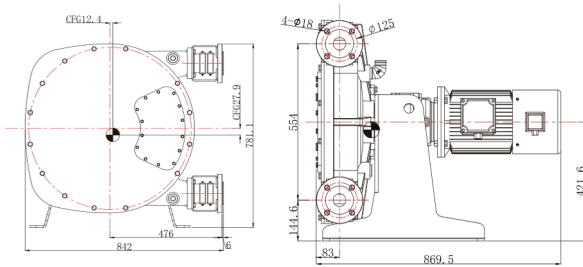
- NR • EPDM
- NBR • CSM
- F-NR • F-NBR

Other Parameters:

Weight: 282 kg
Lubricating oil dosage: 10L

Technical Parameters

Self-Priming Height [m]9.5(water) Maximum
Particle Diameter [mm]8.3 Cliber Size
[inch]2" Motor Power [kW]4/5.5 Rated
Voltage [V]220/380 Rated Speed [rpm]41
Capacity [L]2.9 Rated Flow [L/H]7175
Maximum Flow [L/H]17500 Max Pressure
[bar]6 Maximum Head [m]60



Note: All dimensions are in millimeters (mm); The length of the motor will vary with different brands and types, please consult you local dealer for details.

Note: see P3 for the usage of graph.



FC 65

Pump Material:

Cast Iron
 Contact Material: ABS,
 Stainless Steel, Titanium.

Hose Material:

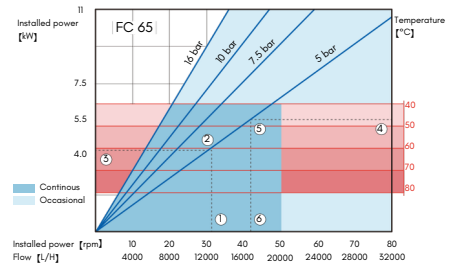
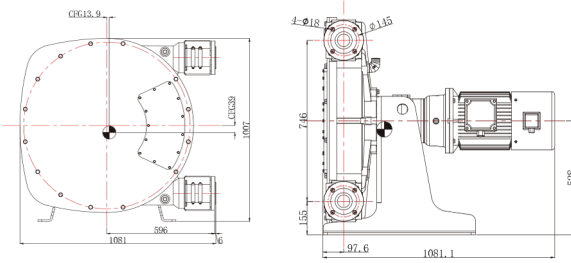
- NR • EPDM
- NBR • CSM
- F-NR • F-NBR

Other Parameters:

Weight: 550 kg
 Lubricating oil dosage: 20L

Technical Parameters

Self-Priming Height [m]9.5(water) Maximum
 Particle Diameter [mm]10.8 Cliber Size
 [inch]2-1/2" Motor Power [kW]5.5/7.5 Rated
 Voltage [V]220/380 Rated Speed [rpm]45
 Capacity [L]6.7 Rated Flow [L/H]18000
 Maximum Flow [L/H]32000 Max Pressure
 [bar]16 Maximum Head [m]160



Note: All dimensions are in millimeters (mm); The length of the motor will vary with different brands and types, please consult you local dealer for details.

Note: see P3 for the usage of graph.



FC 80

Pump Material:

Cast Iron
Contact Material: ABS,
Stainless Steel, Titanium.

Hose Material:

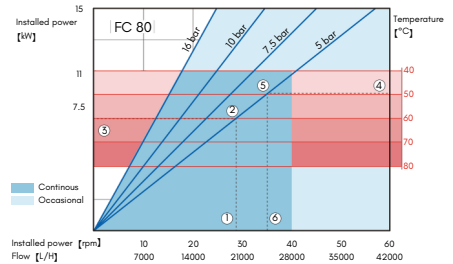
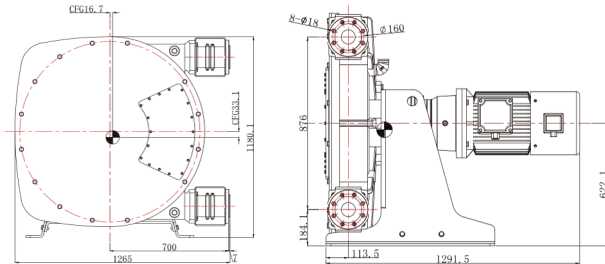
- NR • EPDM
- NBR • CSM
- F-NR • F-NBR

Other Parameters:

Weight: 900 kg
Lubricating oil dosage: 30L

Technical Parameters

Self-Priming Height [m]9.5(water) Maximum
Particle Diameter [mm]3.3 Cliber Size
[inch]3" Motor Power [kW]7.5/11 Rated
Voltage [V]220/380 Rated Speed [rpm]35
Capacity [L]11.7 Rated Flow [L/H]24500
Maximum Flow [L/H]42000 Max Pressure
[bar]6 Maximum Head [m]60



Note: All dimensions are in millimeters (mm); The length of the motor will vary with different brands and types, please consult you local dealer for details.

Note: see P3 for the usage of graph.



FC 100

Pump Material:

Cast Iron
Contact Material: ABS,
Stainless Steel, Titanium.

Hose Material:

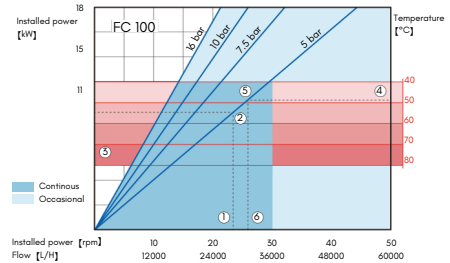
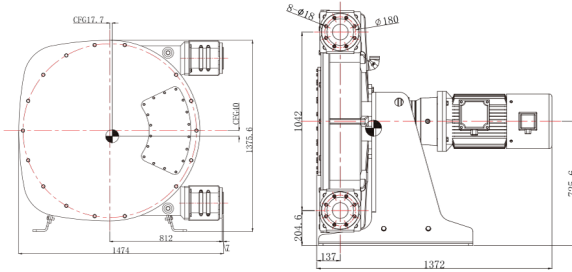
- NR • EPDM
- NBR • CSM
- F-NR • F-NBR

Other Parameters:

Weight: 14000 kg
Lubricating oil dosage: 40L

Technical Parameters

Self-Priming Height [m]9.5(water) Maximum
Particle Diameter [mm]1.5 Cliber Size
[inch]4" Motor Power [kW]11/15 Rated
Voltage [V]220/380 Rated Speed [rpm]35
Capacity [L]20 Rated Flow [L/H]42000
Maximum Flow [L/H]60000 Max Pressure
[bar]6 Maximum Head [m]60



Note: All dimensions are in millimeters (mm); The length of the motor will vary with different brands and types, please consult you local dealer for details.

Note: see P3 for the usage of graph.



FC 125

Pump Material:

Cast Iron
Contact Material: ABS,
Stainless Steel, Titanium.

Hose Material:

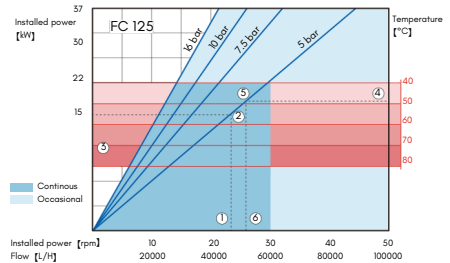
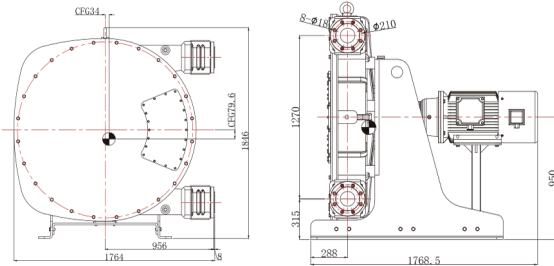
- NR
- EPDM
- NBR
- CSM
- F-NR
- F-NBR

Other Parameters:

Weight: 2400 kg
Lubricating oil dosage: 60L

Technical Parameters

Self-Priming Height [m]9.5(water) Maximum
Particle Diameter [mm]21 Cliber Size [inch]5"
Motor Power [kW]22 Rated Voltage
[V]220/380 Rated Speed [rpm]33 Capacity
[L]33.3 Rated Flow [L/H]66000 Maximum
Flow [L/H]100000 Max Pressure [bar]16
Maximum Head [m]160



Note: All dimensions are in millimeters (mm); The length of the motor will vary with different brands and types, please consult you local dealer for details.

Note: see P3 for the usage of graph.

Hose Type

Choose the right hose for your application.

Features Temperature



NR

- Natural Rubber
- Outstanding abrasion resistance.
- Generally resistant to diluted acids and alcohols.

Fluid Temp.
-20° 80 (°C)



EPDM

- Excellent chemical resistance, especially to ketones, alcohols and concentrated acids.

Fluid Temp.
-20° 100 (°C)



NBR

- Resistant to oils, greases, alkalis and detergents.

Fluid Temp.
-20° 80 (°C)



CSM

- Outstanding chemical resistance to highly concentrated acids and bases.

Fluid Temp.
-20° 85 (°C)



F-NR

- White inner surface, easy to eat Physical contact applies to all kinds of food Products, including dairy products.

Fluid Temp.
-20° 80 (°C)



F-NBR

- White inner surface, easy to eat Physical contact applies to all kinds of food Products, including fatty foods.

Fluid Temp.
-20° 80 (°C)

Application Case

Trust FRANKCO for superior performance and lasting quality.



Application Case

Trust FRANKCO for superior performance and lasting quality.



**" Engineered for Efficiency,
Built for Reliability. "**

RANKCO



Great Oriental Corporation Co., Ltd.

02 408 8661 / 074 300 212 4

062 665 9797

088 790 4383

061 175 4646

saleteam1@gotcorp.co.th

saleteam2@gotcorp.co.th

www.gotcorp.co.th

www.wastex.co.th